

Technical specification of:

Fun House



"Ice Castle"

I.E. PARK S.r.l.

Via Don P. Borghi 3

42043 Praticello di Gattatico REGGIO EMILIA - ITALY

phone +39-0522-678526 - fax +39-0522-678750

e-mail: sales@iepark.com - website: www.iepark.com

REV.2022



Index

	page
Description	2
Fun House – Technical Specification and Drawings	3
Tricks	6

Description

Fun House is an amusement facility in which visitors encounter and interact with various devices designed to surprise, challenge and amuse them.

Fun houses are participatory attractions, where visitors enter and move around by walking. Incorporating aspects of a playful obstacle course, they seek to distort conventional perceptions and startle people with unstable and unpredictable physical circumstances within an atmosphere of wacky whimsicality.

The kind of public is suitable for complete family, who can enjoy an active experience all along 3 floors with end of giant slide.

Some of most common features and tricks (ranging 15-24 units) in Fun House:

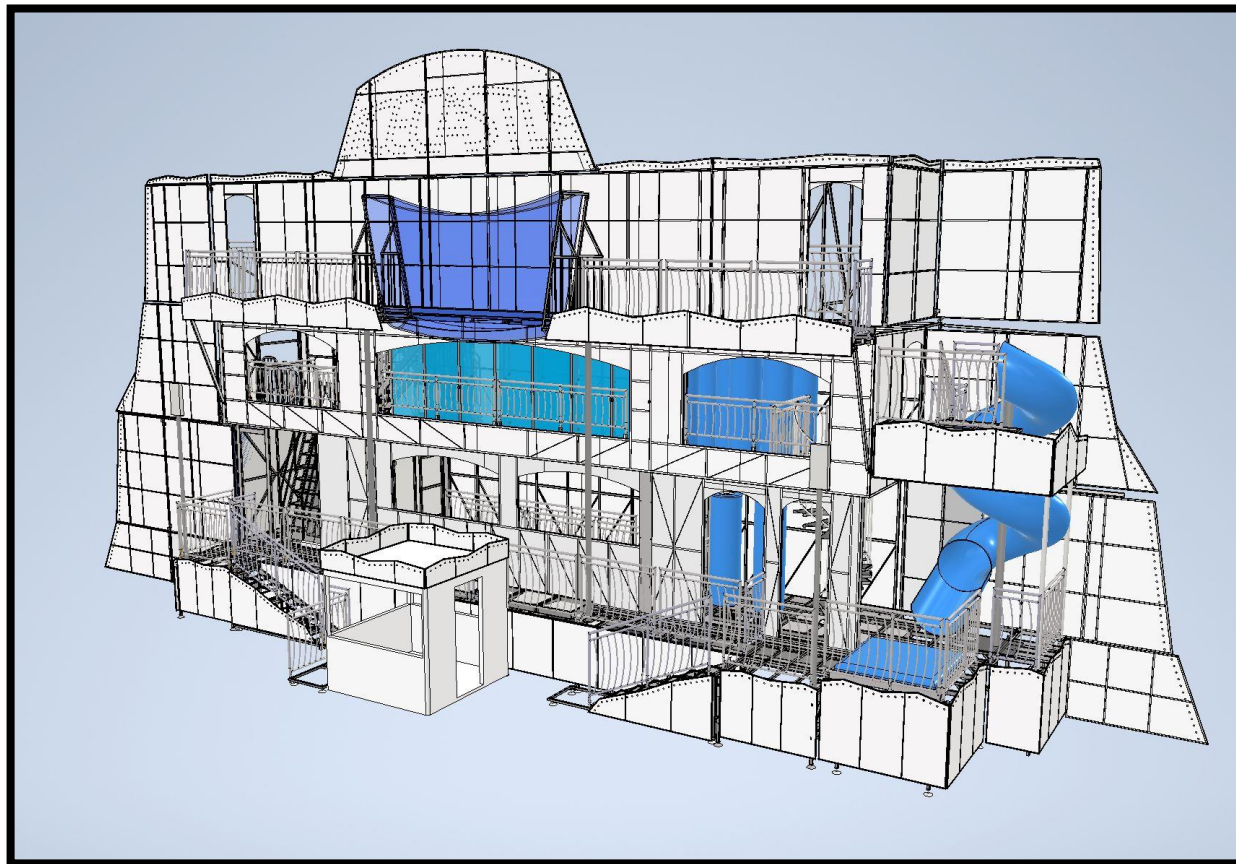
- Slides, usually much taller and steeper than those on playgrounds.
- Vibrating Platforms
- Sections of floor that undulated up and down, tipped from side to side or moved forward and back, either motorized or activated by the person's weight
- Idle Roller platforms
- Suspended Bridges
- Stairs that move up and down, tipped from side to side, or slid side-to-side, alternating directions between steps
- Blowers shooting air up from the floor, but effective at startling almost anyone and making them jump and scream
- An array of distorting mirrors.
- A horizontal revolving cylinder or barrel, sometimes called "barrel of love" or "barrel of fun", to try to walk through without falling down
- Revolving Foam Cylinders, in which visitors have to walk and be squeezed in between 2 or more of them.
- Mirror maze
- Led Light games, for example suspended cylinders in which if visitors touch them, they change colour or lighting effect.

Once passengers are inside, they could stay as long as they wish, repeating each feature as many times as they chose.

Custom Theme available.

Fun House – Trailer mounted

Technical Specifications



TECHNICAL DATA

Dimensions	22 x 7.5 x h. 10 m (Possible Customization)
Instant capacity	60 passengers
Theoretical capacity	700 passenger per hour
No. tricks	15-24
Weight	24 tons
Shipping volume	1 semitrailer 13.60x2.5x4 m+ 1 container 40 OT

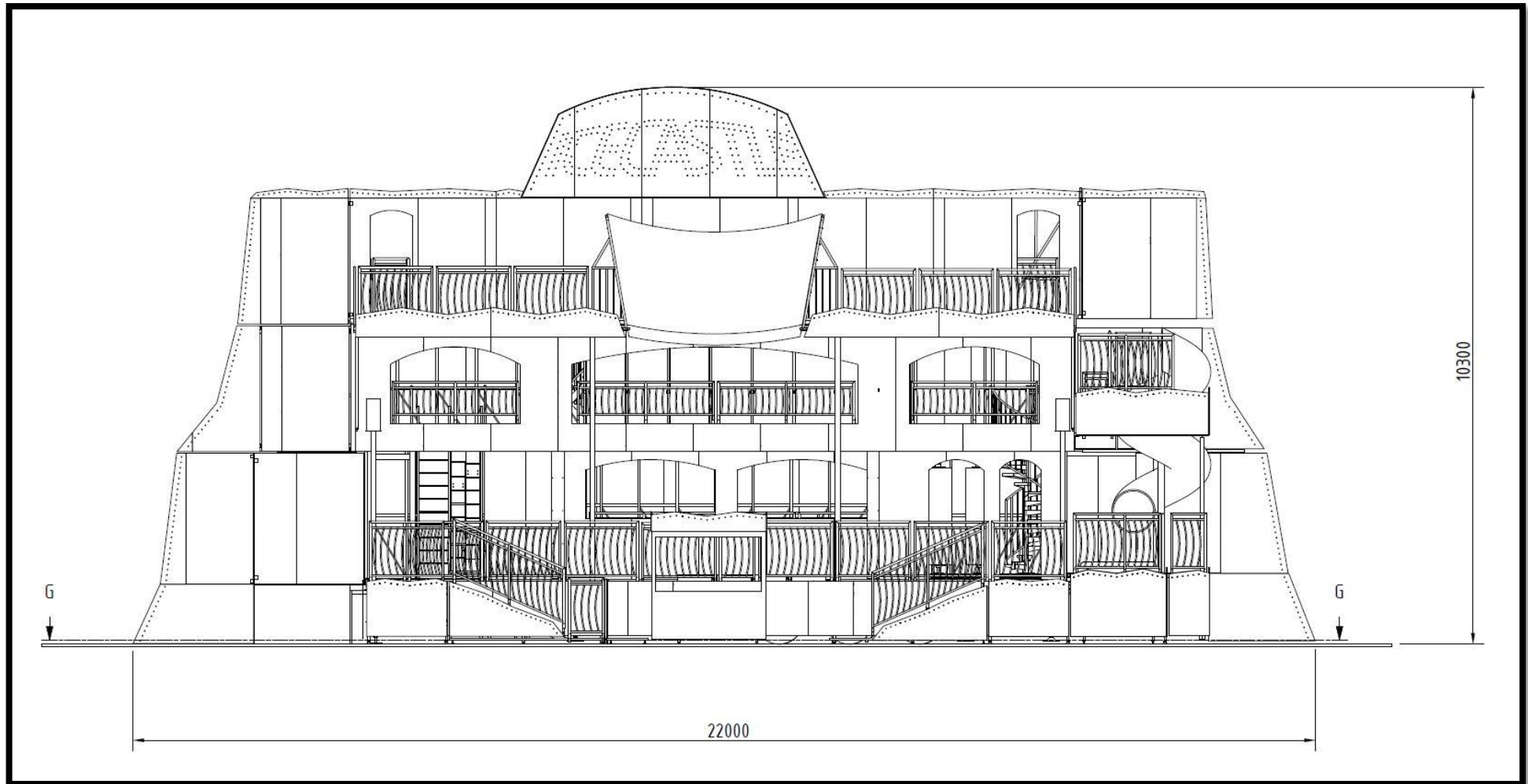
Passengers age/height restrictions: Minimum admissible age 8 years old, accompanied

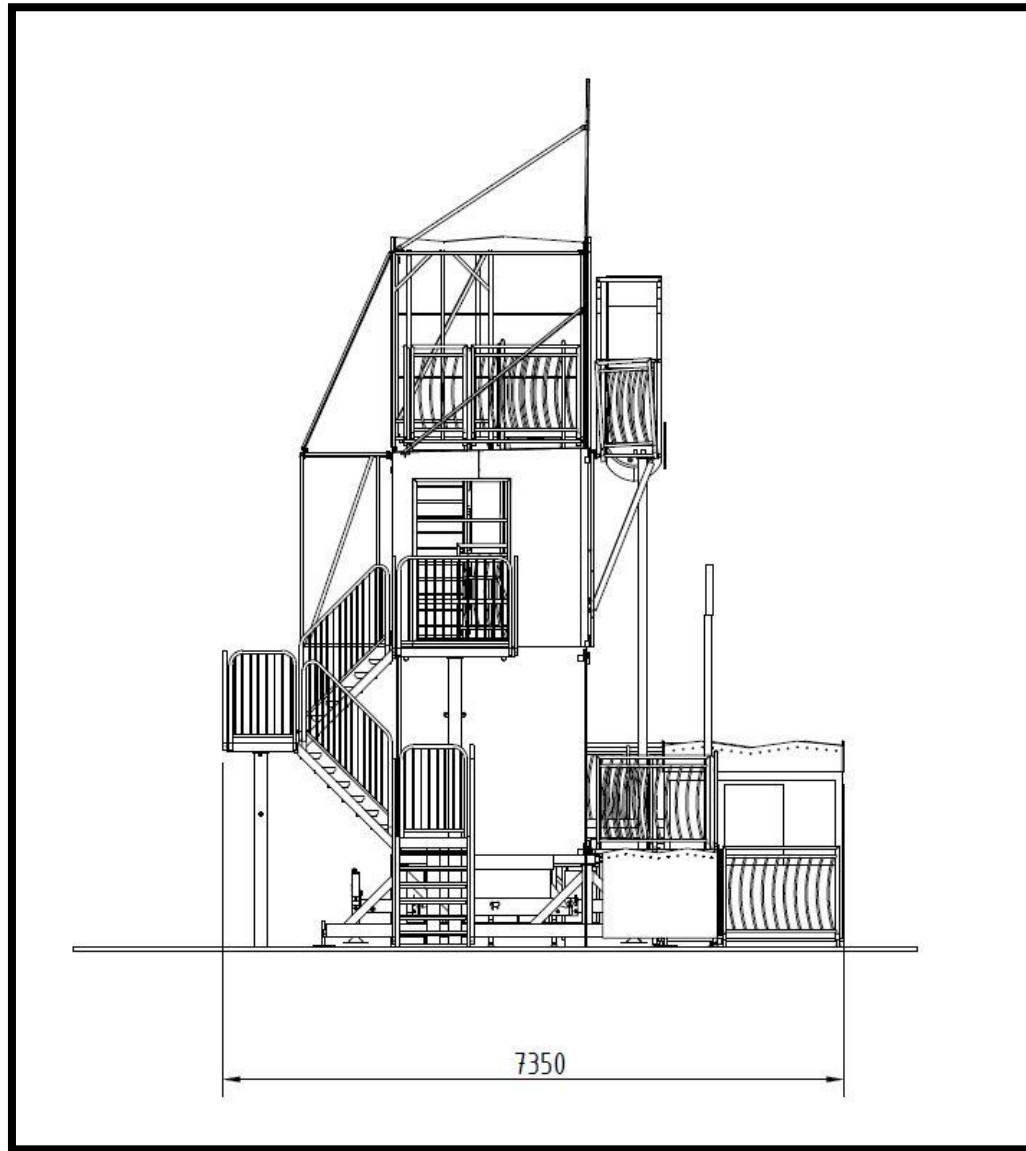
ELECTRICAL DATA

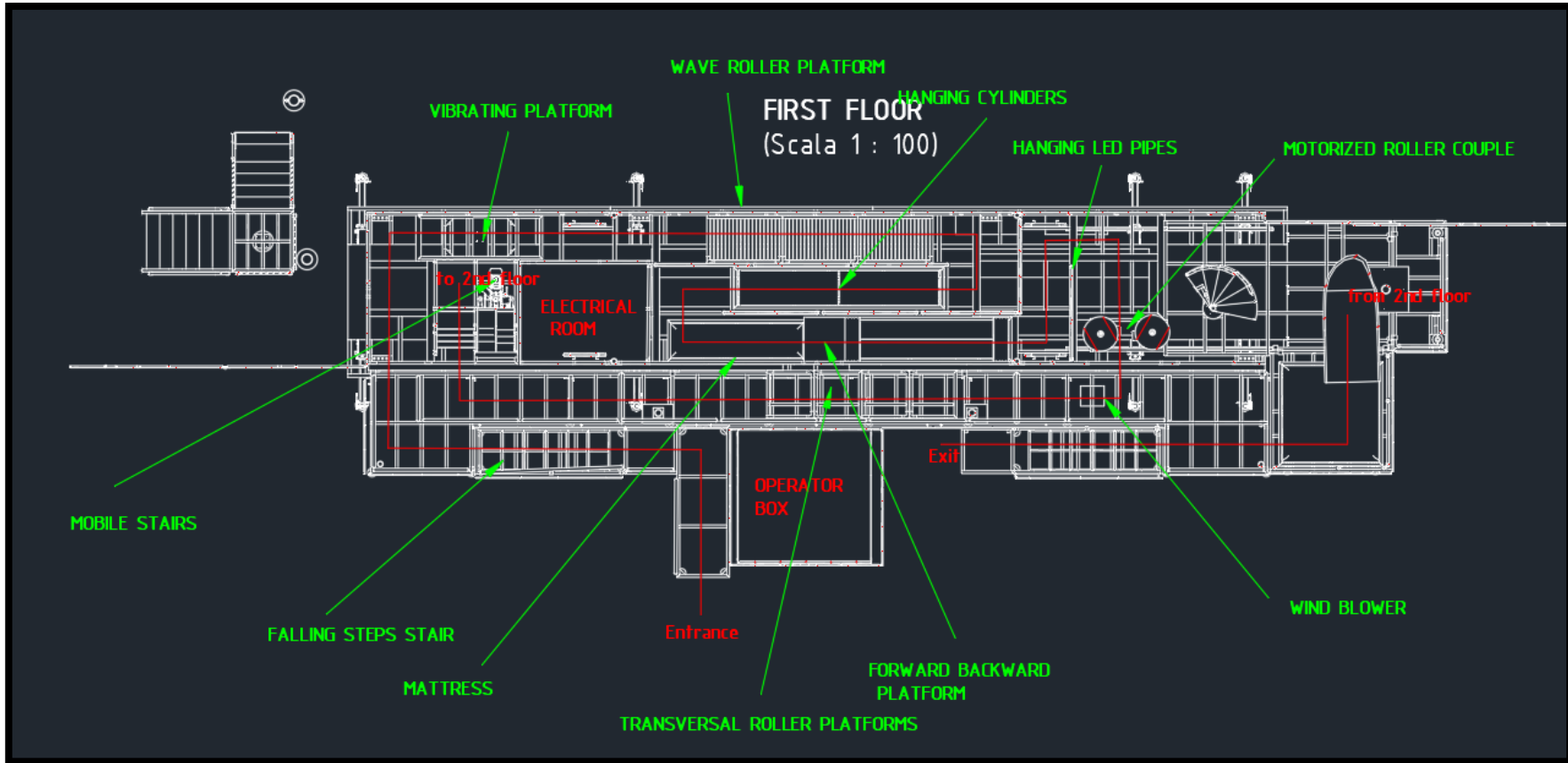
Voltage	400 VAC 3phase + neutral + earth
Frequency	50/60 Hz
Power	30 kw (Included lighting power)
Nominal Current	91 A
Noise level	<85 db
Standard	EN 13814:2019

Fun House

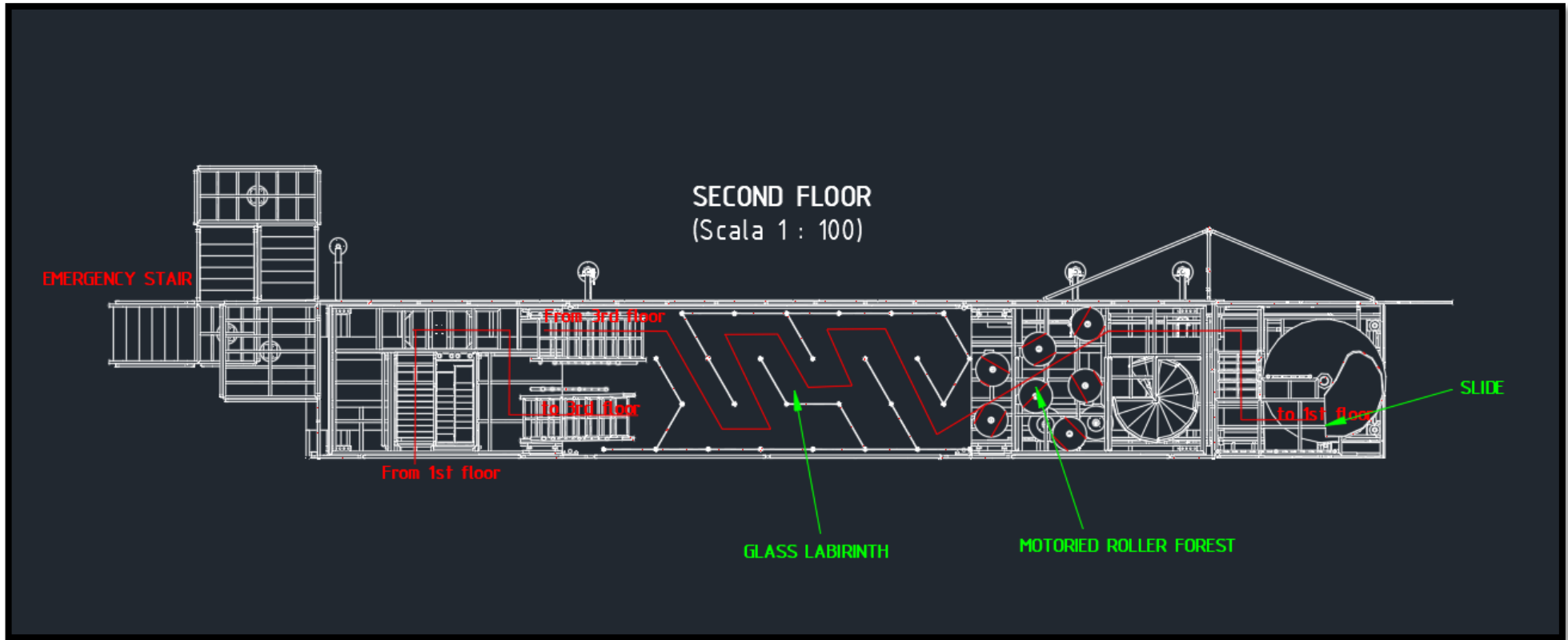
Technical Drawings

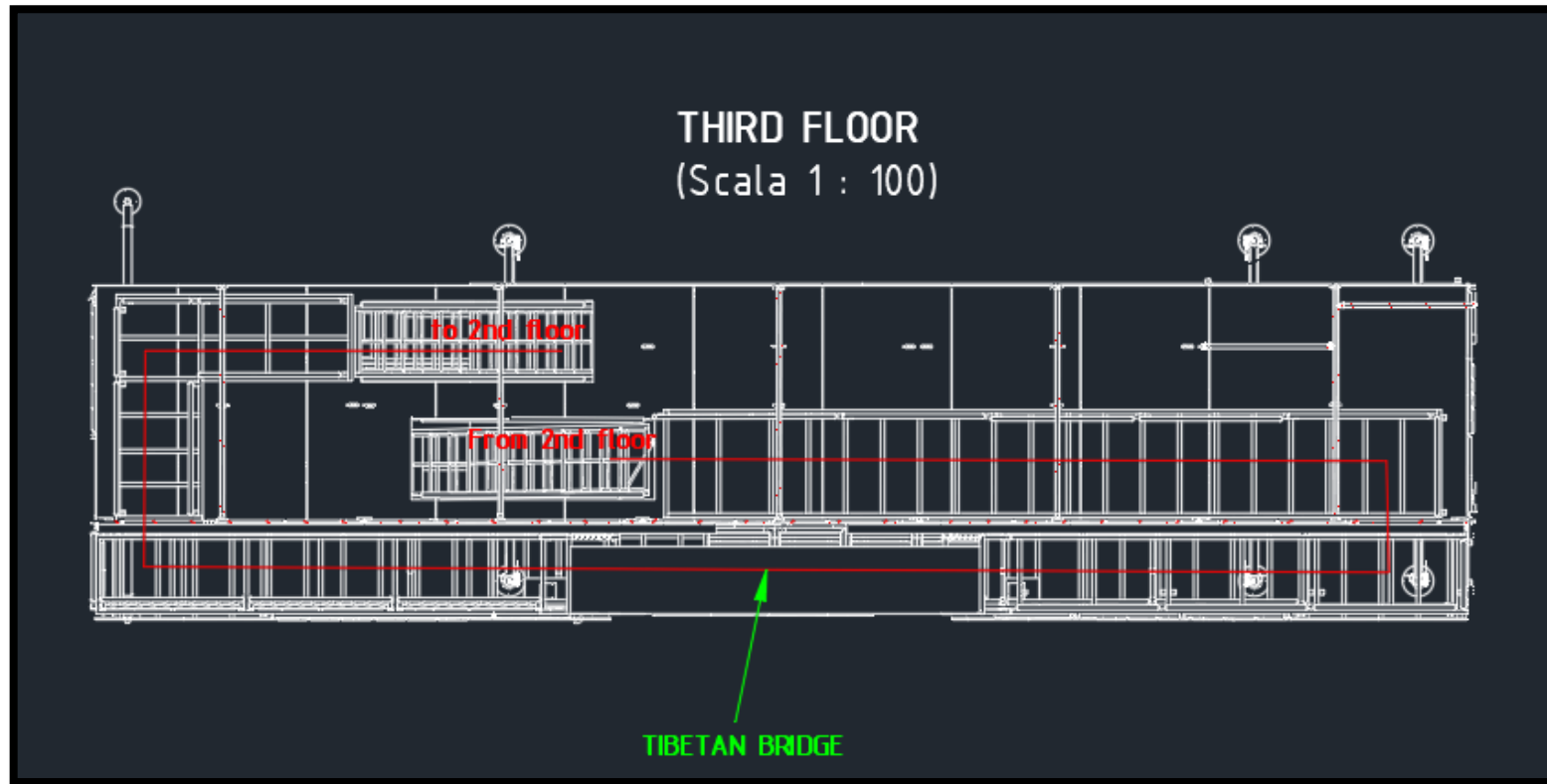


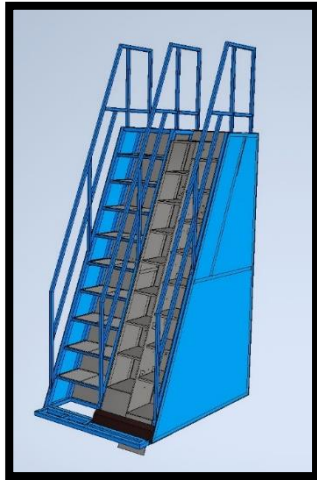




FUN HOUSE





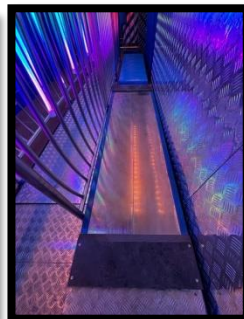
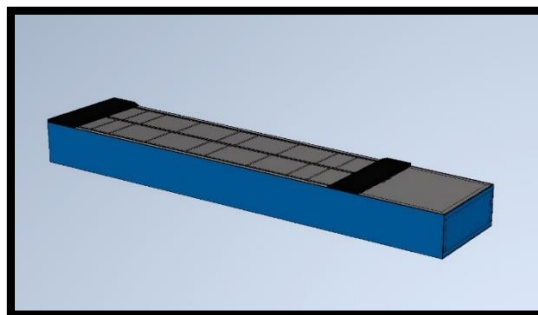


MOBILE STAIRS

DESCRIPTION: Trick in which people have to climb steep stairs that slide up and down. If the passengers do not feel like to climb the moving stairs, they can climb a fixed one next to them.

FEATURES:

- L 1500 mm x W 1200 mm x H 2440 mm
- Mechanical Customization Possible (i.e. single mobile stair, double mobile stair,...)
- Control Customization Possible (i.e. activation by operator, by photocell,...)

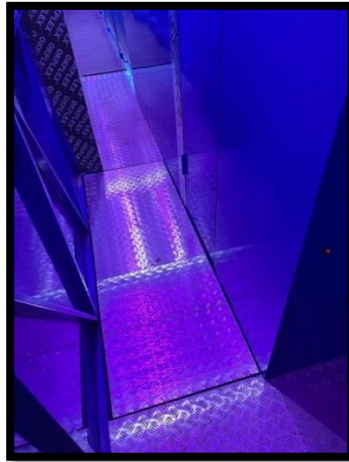
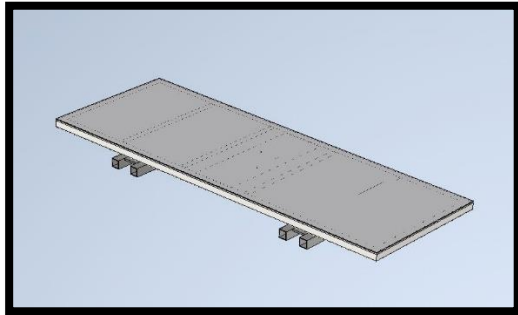


FORWARD-BACKWARD PLATFORM

DESCRIPTION: Trick in which people have to walk on a platform that moves forward and backward trying to stay balanced.

FEATURES:

- L 3000 mm x W 650 mm x H 300 mm
- Mechanical Customization Possible (i.e. single platform, double platform,...)
- Control Customization Possible (i.e. activation by operator, by photocell,...)

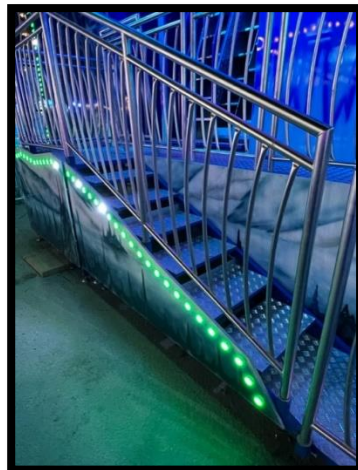


VIBRATING PLATFORM

DESCRIPTION: Trick in which people have to walk on a platform that vibrates.

FEATURES:

- L 1800 mm x W 650 mm x H 150 mm
- Mechanical Customization Possible (i.e. length, vibration frequency,...)
- Control Customization Possible (i.e. activation by operator, by photocell,...)

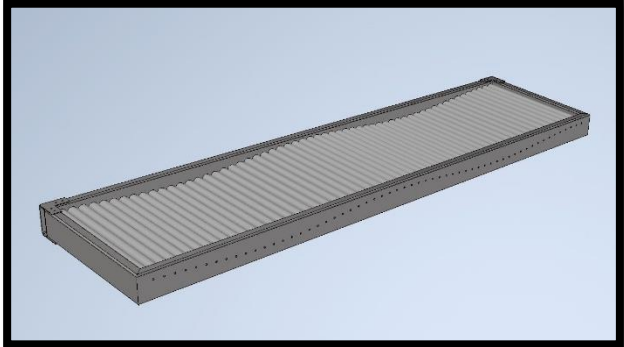
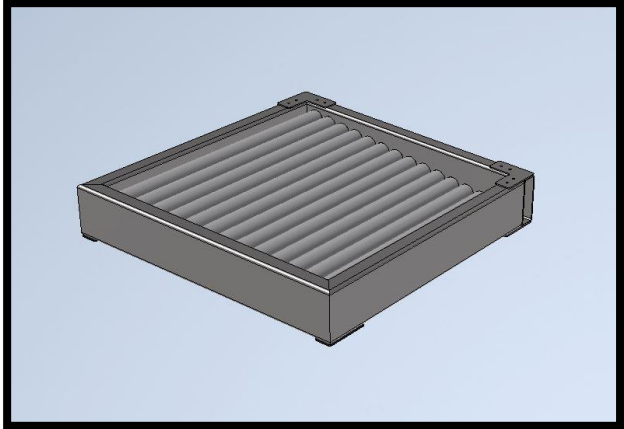


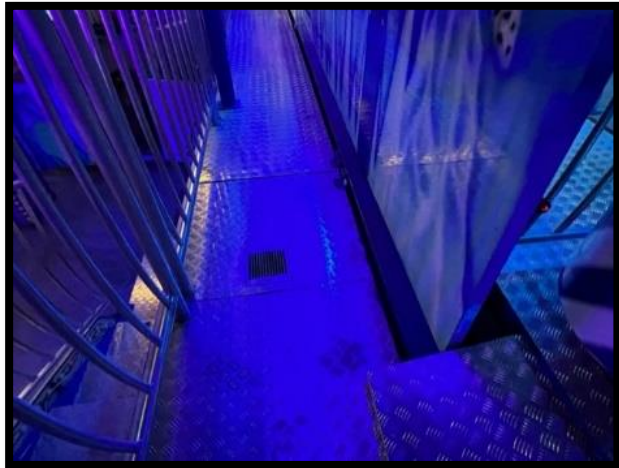
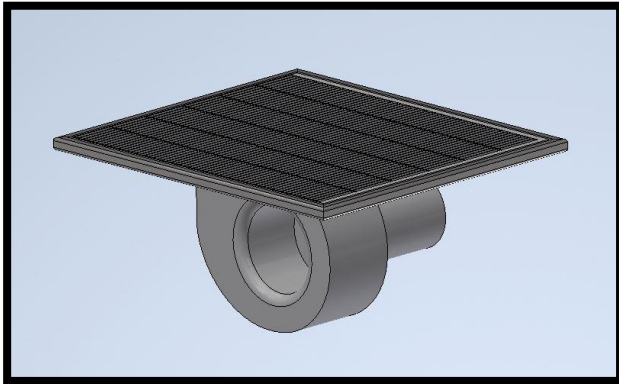
CRAZY STAIR

DESCRIPTION: Trick in which people have to go up on a stair in which some of its steps can rotate.

FEATURES:

- L 2200 mm x W 650 mm x H 1050 mm
- Mechanical Customization Possible (i.e. size, number of rotating steps,...)

	<h3 style="text-align: center;">ROLLER PLATFORM</h3> <p>DESCRIPTION: Trick in which people have to walk on a platform that has idle rollers on its path and they have to try to stay balanced.</p> <p>FEATURES:</p> <ul style="list-style-type: none">• L 2520 mm x W 650 mm x H 120 mm• Mechanical Customization Possible (i.e. length, roller curve shape...)
	<h3 style="text-align: center;">ROLLER PLATFORM BLOCK</h3> <p>DESCRIPTION: Trick in which people have to walk on a platform that has idle rollers on its path and they have to try to stay balanced.</p> <p>FEATURES:</p> <ul style="list-style-type: none">• L 650 mm x W 650 mm x H 120 mm• Mechanical Customization Possible (i.e. length, roller curve shape...)• The customer can combine multiple blocks in order to change the path game

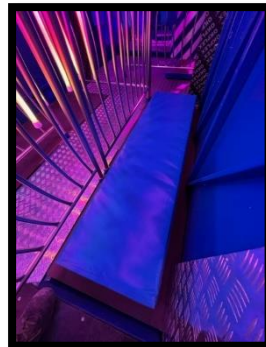
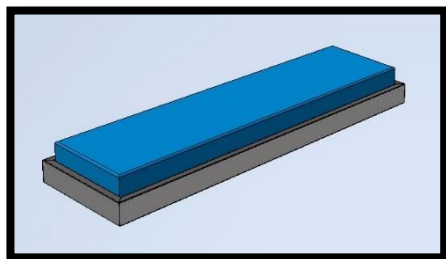


WIND TURBINE

DESCRIPTION: Trick in which people have to walk on a platform that blows air from the bottom.

FEATURES:

- L 700 mm x W 650 mm x H 400 mm
- Control Customization Possible (i.e. activation by operator, by photocell,...)

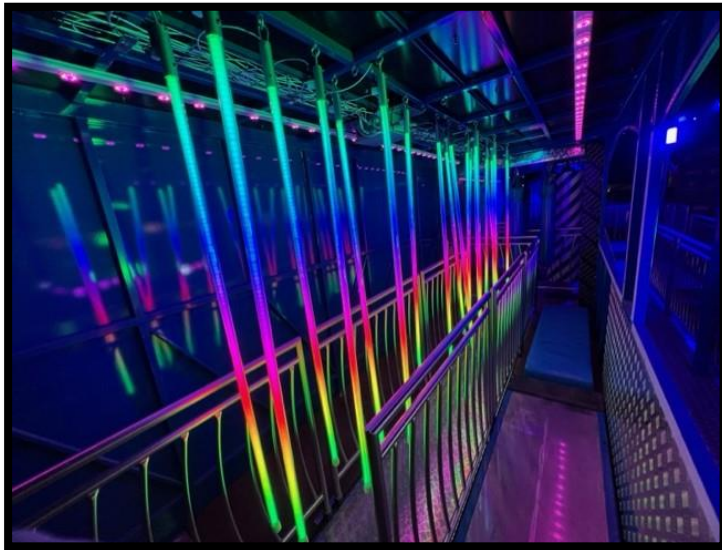


MATTRESS

DESCRIPTION: Trick in which people have to walk on a mattress without stumbling.

FEATURES:

- L 2000 mm x W 650 mm x H 200 mm
- Mechanical Customization Possible (i.e. length, colour, Fire Resistant PVC...)

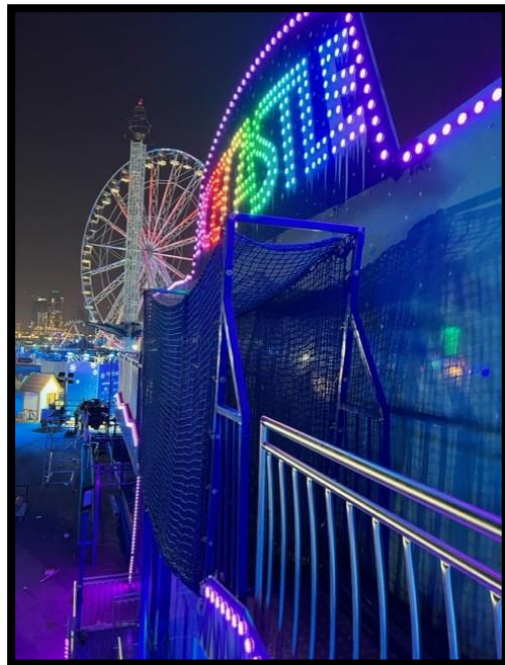


HANGING LED PIPES

DESCRIPTION: Trick in which people have to walk on a path in which hanged led pipes change their colour or lighting effect if they are hit.

FEATURES:

- Customizable Path
- 20 Pipes controllable per Centraline

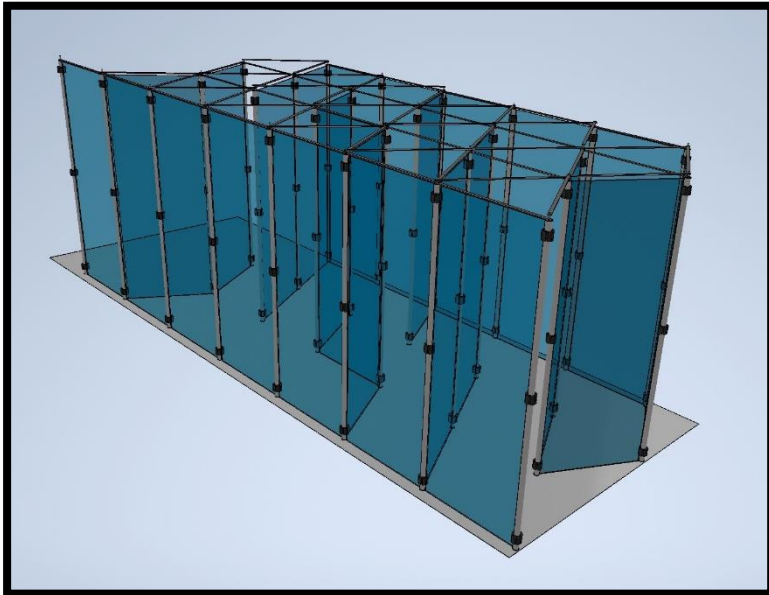


SUSPENDED BRIDGE

DESCRIPTION: Trick in which people have to walk on a suspended bridge.

FEATURES:

- L 3500 mm x W 650 mm x H 2000 mm
- Mechanical Customization Possible (i.e. length, rope, wooden path, colours...)



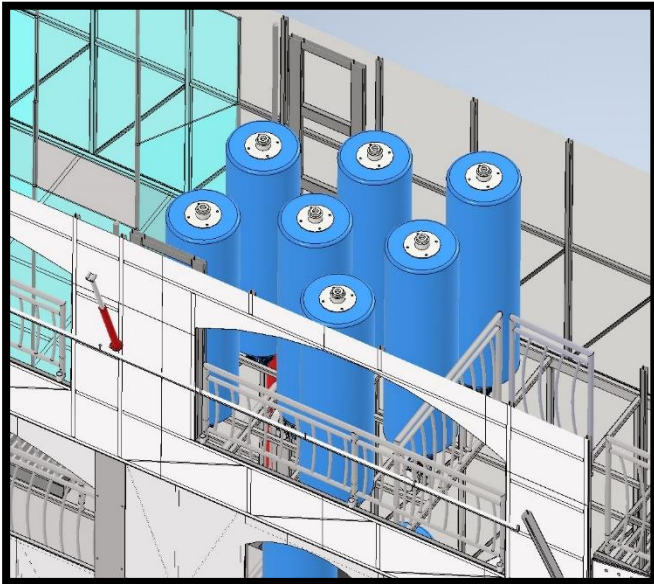
MIRROR MAZE

DESCRIPTION: Trick in which people have to walk in a glass maze.

FEATURES:

- L 6000 mm x W 2300 mm x H 2100 mm
- Mechanical Customization Possible (i.e. path, glass types,...)
- The customer can customize the path by changing the position of the glasses
- Possibility to add more effects by means of smoke machine and light games



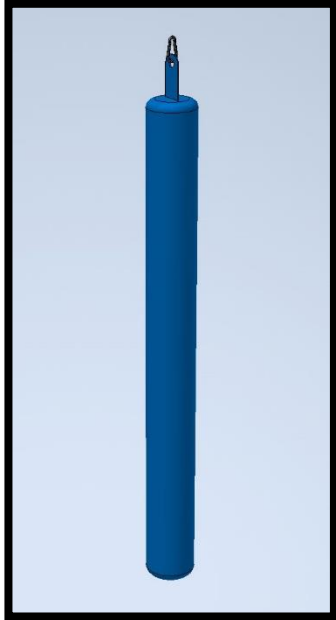


FOAM ROTATING CYLINDERS

DESCRIPTION: Trick in which people have to walk in between two or more foam cylinder being squeezed.

FEATURES:

- Each Cylinder has a diameter of 500 mm and a height of 1800 mm
- Between each cylinder there should be at least 750 mm from axis to axis
- Customization Possible (Colour, Fire resistant PVC,...)
- Control Customization Possible (i.e. motorized rotation or not,...)

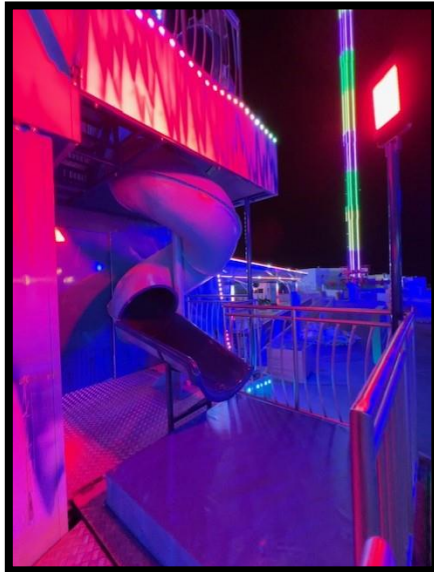
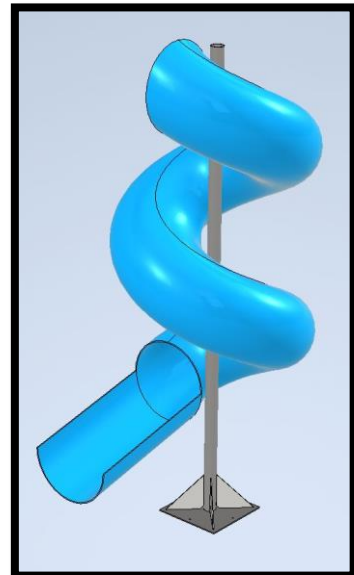


FOAM HANGING CYLINDERS

DESCRIPTION: Trick in which people have to walk in between a path in which there are foam cylinder hanged on the roof and they can punch them.

FEATURES:

- Each Cylinder has a diameter of 120 mm and a height of 1200 mm
- Customization Possible (Colour, Fire resistant PVC,...)



TOBOGGAN SLIDE

DESCRIPTION: Trick in which people have to slide down.

FEATURES:

- 4,4 m Height
- 1600 mm External Diameter
- Landing mattress included
- Customization Possible (Colour, Entrance shape, Exit shape...)