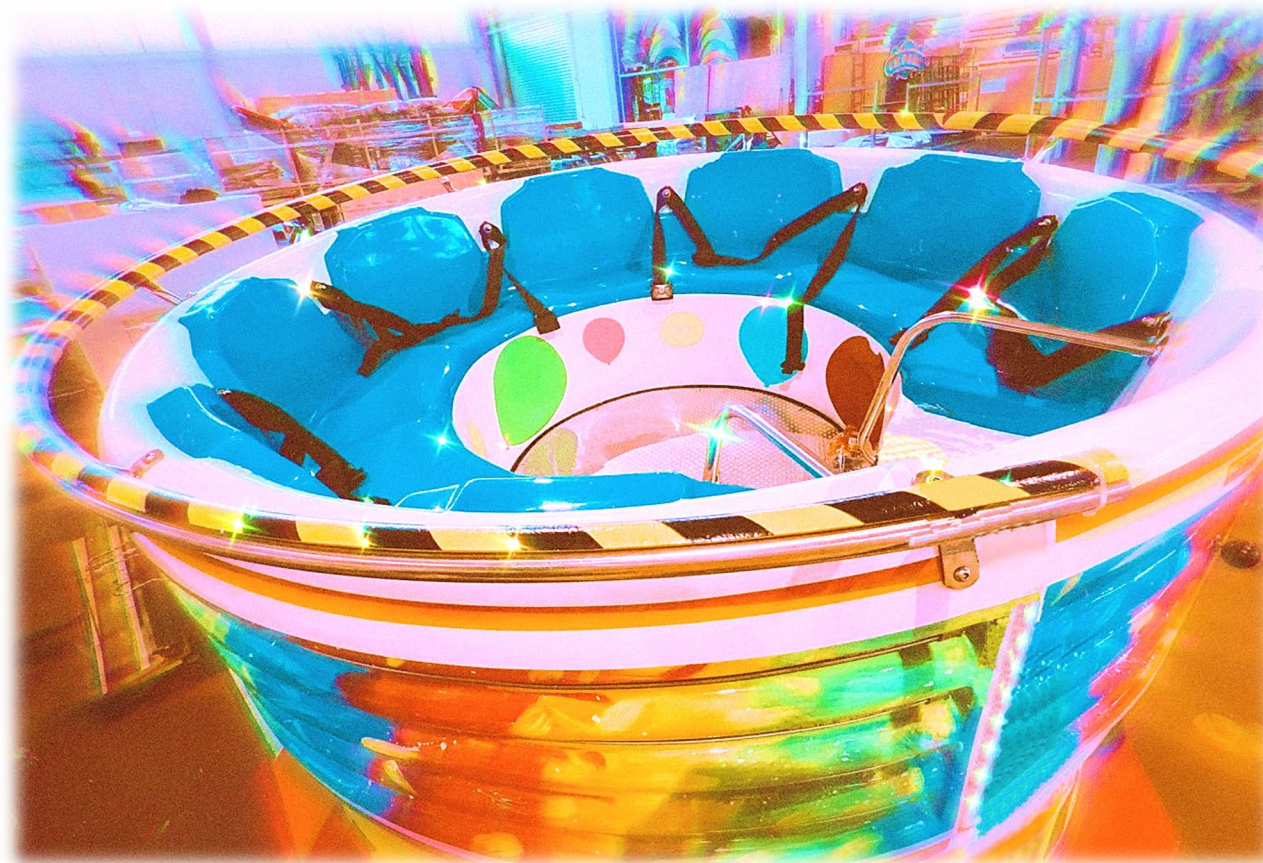


Technical specification of:

Mini Tagadà



I.E. PARK S.r.l.

Via Don P. Borghi 3

42043 Praticello di Gattatico REGGIO EMILIA - ITALY

phone +39-0522-678526

e-mail: sales@iepark.com - **website:** www.iepark.com

Gen. 2023 -Revision 00



Index

	page
Description	2
Technical data	3
Overall view and dimension	4
Weight - Load - Speed	5
Decorative panels and theme	6
Motion description	7
General layout	8
Pictures	9

Description

Designed and developed at IE Park, this ride brings happiness and Joy to children, Thanks to its simplicity and safety, children can enjoy a very fun ride.

This ride includes two rotational motions in which one occurs on the basement of the ride which allows its pin to rotate about an axis vertical to the ground, moreover, the second motion is an inclined rotation with respect to the former one, this allows the second pin attached to the resin body to be rotating with an angle of 3.5 degrees.

The combination of the above mentioned motions, bring satisfaction and joy to the children while maintaining a low speed.

The use of seatbelts and a handrail insures the safety of the children.

In this ride, a very decorative and colorful gate with protection panels is included, containing shiny lights representing the ride and its beauty.

Mini Tagada is available in a size which is suitable for children, the colors and lighting is up to the customer's request.

- **Children-Size**
- **Arbitrary decoration and color**

The Position:

- **Inside the protection panels**

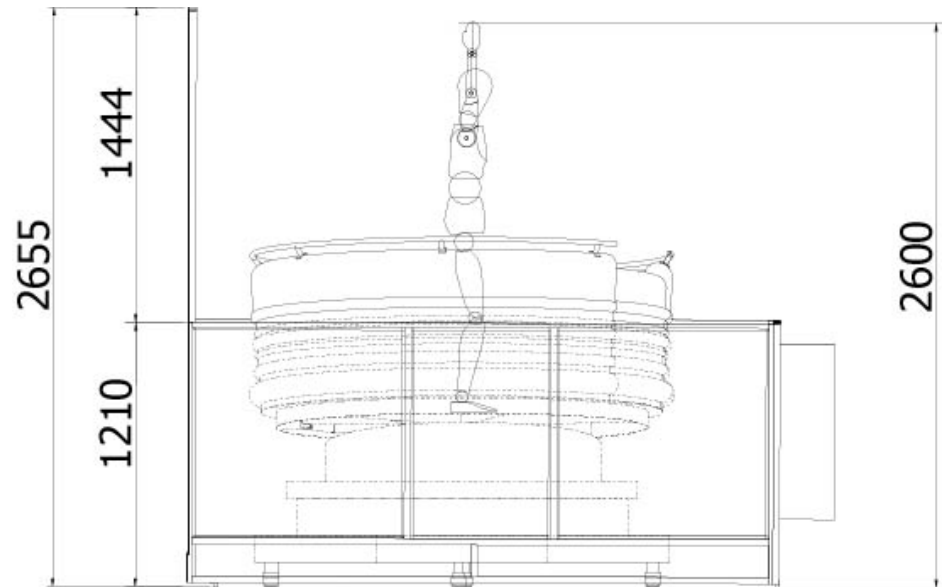
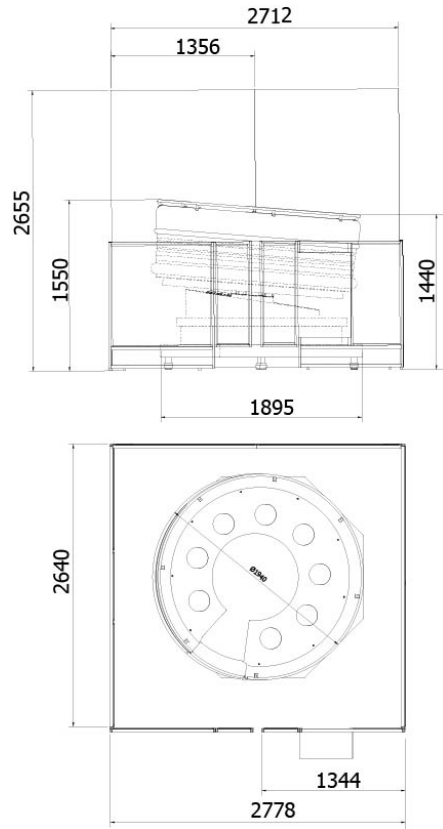
Mini Tagada is positioned at the center of the the panels, having a gate of entrance.

And power **supply system:**

- 1. Electrical Motor 0.55kW**
- 2. Electrical Motor 1.5kW**

Mini tagadà

Technical Data



GENERAL OUTLINE

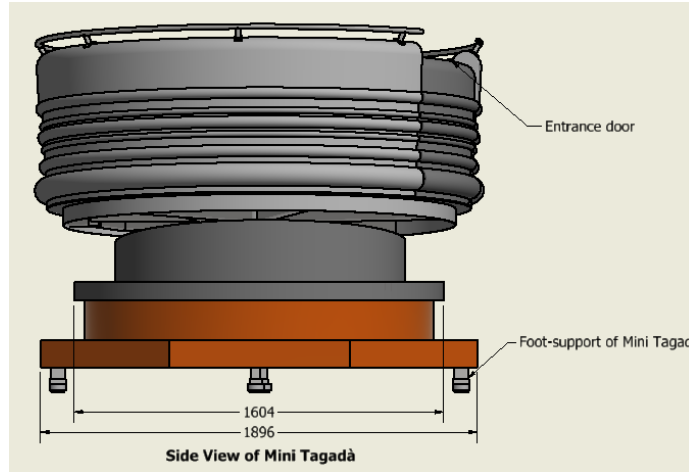
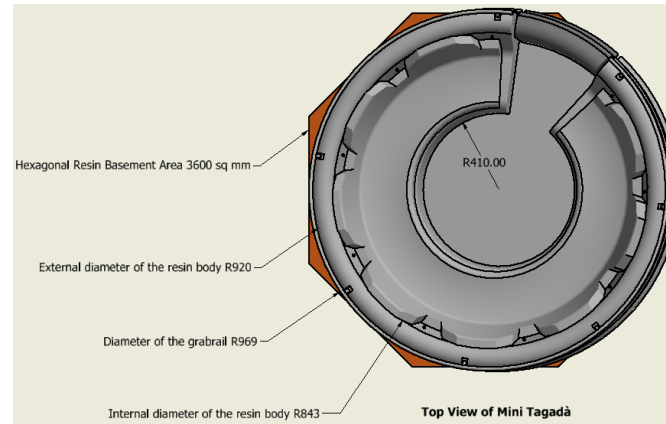
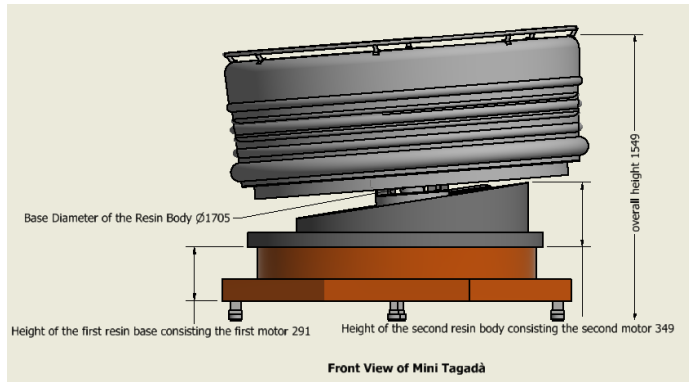
DIMENSION

Min Diameter	1.84 m / 6,036 ft
Max Diameter	1.92 m / 6,299 ft
Length	1.9 m / 6,23ft
Weight	500 kg / 50 kN
Maximum height	1.6 m / 5,24 ft
Capacity	8 children/6 children and 1 adult (Max 75kg)
Size requirements	Minimum 3.6 sq m / 38.75 sq ft
Shipping volume Mini tagadà	2000 x 2000 x 1600
Shipping volume Fence	3050 x 400 x 1450
Noise level	<80db

ELECTRICAL DATA

1st Motor power	0.55kW
Speed	2750 rpm
Voltage	230/400V
Rated frequency	50Hz
2nd Motor Power	1.5kW
Speed	2855 rpm
Voltage	230/400V
Rated frequency	50Hz
Total power	2.55Kw
Lighting	500 W

Overall view and dimension



POWER SUPPLIED SYSTEM

AC-Three phase

Electrical Motor AC-Three phase

PASSENGER RESTRICTION (EN 13814)

Age: children between 2 and 4 years old who are approximately 90cm and 105cm of height, allowed only if Accompanied.

Age: Minimum 4 years old , Height: minimum 105 cm
Allowed not accompanied by an adult.

Age: Minimum 4 years old , Height: lower than 105cm
Allowed only if accompanied by an adult.

Maximum height 160 cm suggested.

Minimum Safety Height for the ride installation is 305 cm.

Mini tagadà

Weight - Load - Speed



No.	DESCRIPTION	INCLUDED/OPTIONAL
1	Alternating-color string lights	OPTIONAL
2	Resin body	INCLUDED
3	Speaker	OPTIONAL
4	Grab rail protective rubber	OPTIONAL

Mini Tagadà weight	500Kg	1102,31 lb
Passenger weight (1 child)	40 Kg	88,1849 lb
Total passengers weight (8 children)	320 Kg	705,479 lb
Mini Tagadà area	3.6 sqm	38.75 sqft
Distributed load	88.8 Kg/sqm	18.18 lb/sqft

Fixated base	2.4 rad/s	137°/s
Rotating Resin body	3.98 rad/s	227°/s

°Note that the use of gearbox with the ratio of $i=56$ is considered.

° The direction of rotation is CW.

Mini tagadà

Decorative panels and theme

- The Theme of the ride, considering its gate and panels is up to the customer's request.
- The name of the ride is presented in colorful lights on the panel.
- The choices of decorative panel is very vast but it is recommended to use images that is appropriate within the above mentioned age group.
- The color of the resin body and the chairs can also be customized.

Recommendation

- The use of various bright colors.
- The use of cartoon characters images.
- The use of string of multi-color lights.



Mini tagadà

Motion description

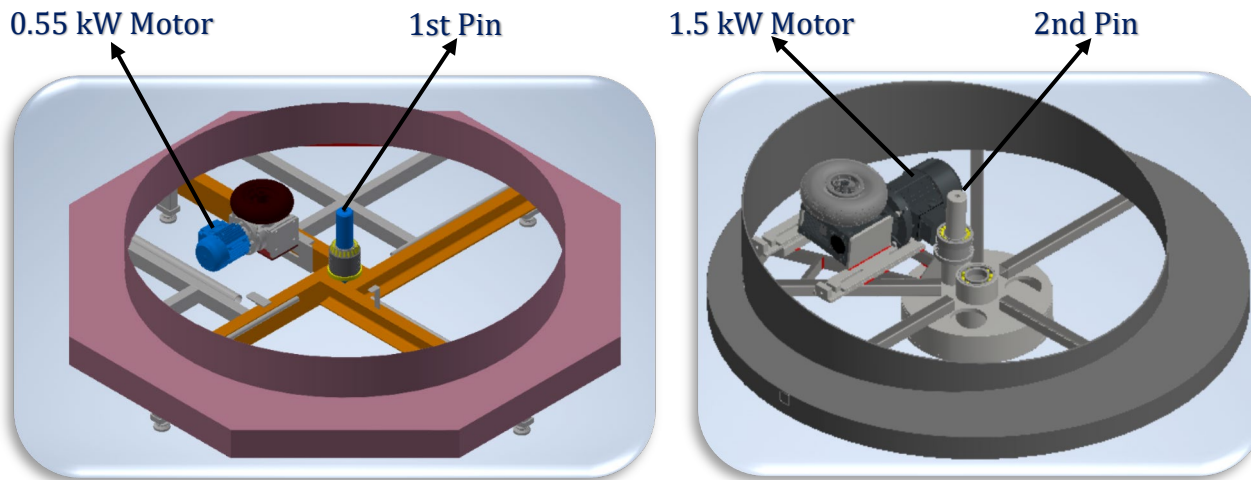


Fig. 1

The mechanism of Mini Tagadà is due to two fundamental motions, this ride consists of two electrical motors AC-three phase, one on the fixed basement that is in charge of the movement of the first pin which makes the rotation about the vertical axis, you can see it in Fig. 1. Further on, the second motor is placed on an inclined structured body which is in charge of transmitting power to the second pin which is tilted with an angle of 3.5 degrees, as shown on Fig. 1, this part will be mounted on the fixed basement. The second motion gives the gravitation sensation to kids especially at the peak point of the resin body.

Safety envelope:

The use of panels around Mini Tagadà is necessary for the suitable placement of the control panel, it is a restricted zone that limits the overflow of persons (children accompanied by adults).

Moreover, it protects the area in which Tagadà is in use that is while it rotates, the other benefit is that, it represents the ride and attracts children.

They can be seen in the Fig. 2.

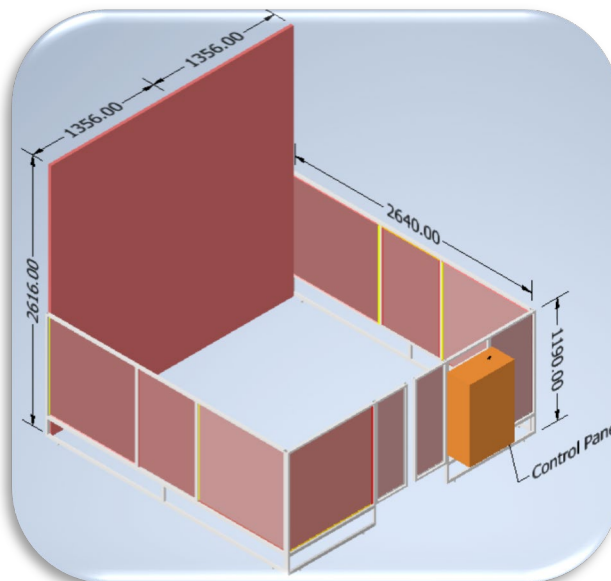


Fig. 2

Accessibility:

According to EN 13814 – 5.2.1.3, the door of the passenger unit for children are intended as a restraining device, when open would project the exterior perimeter of the rotating platform, this must be only opened from the outside. The door lock is placed outside in a way that only the operator can open it from the outside. Shown on Fig. 3.

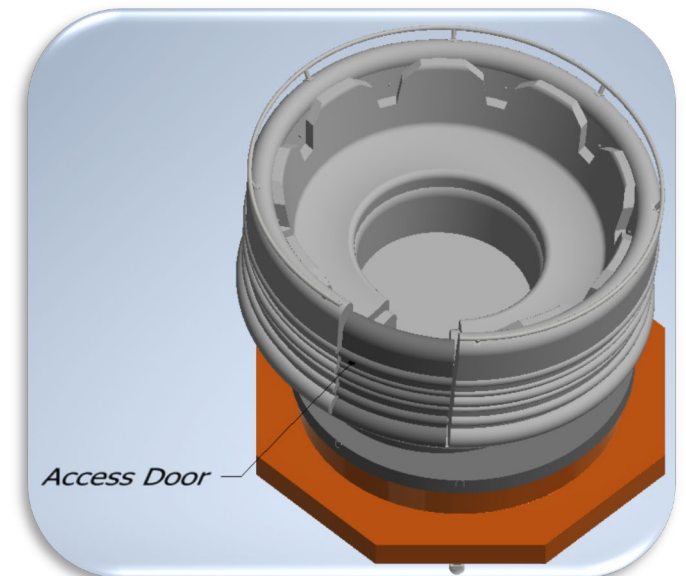
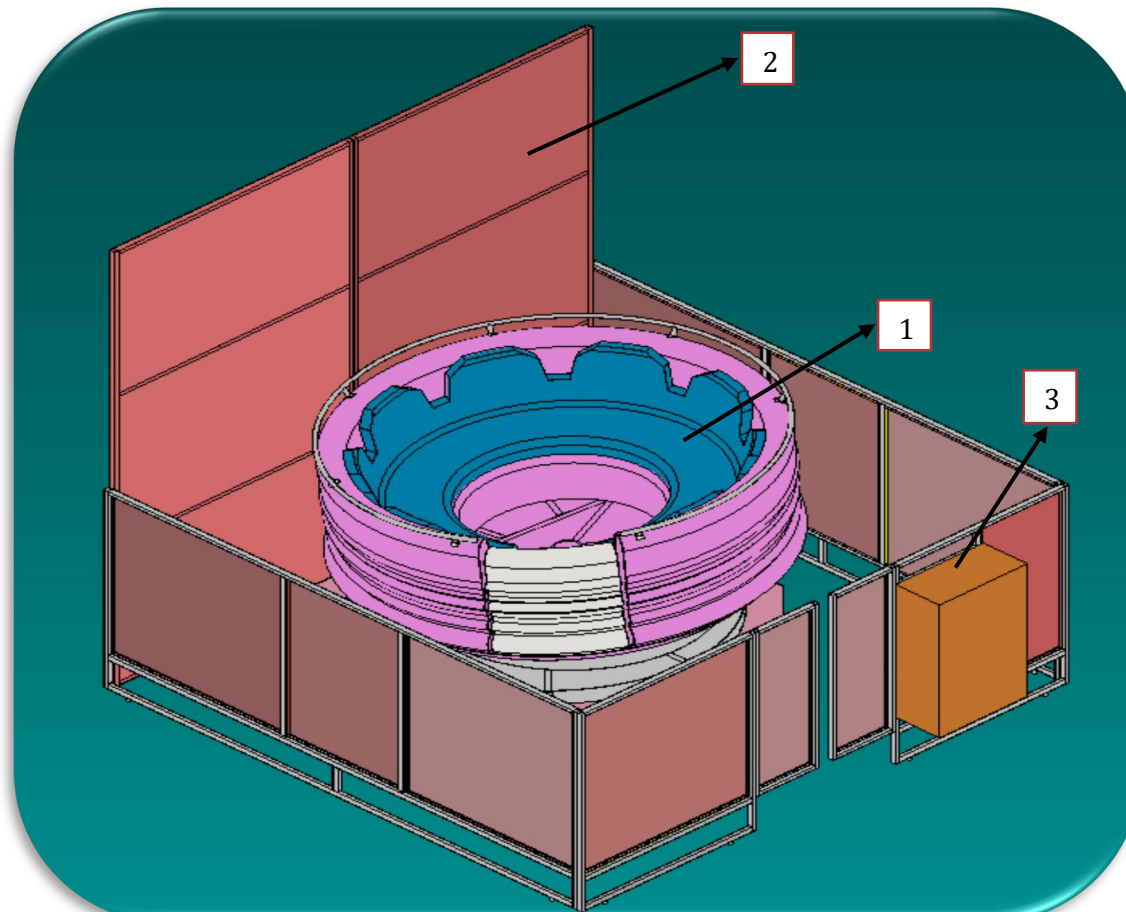


Fig. 3

Mini tagadà

General layout

Number	Description
1	Mini Tagadà
2	Protection Panels
3	Control Panel





Mini tagadà

Pictures

